



Advertising LLC

415 Neponset Avenue, Dorchester, MA 02122 Tell: (617)282-2100 Fax: (617)282-2040

MA #1- Route 1, S/O Gillette Stadium (F/N) - Foxboro/Wrentham/Planville, Massachusetts



#### description

Extensive right hand read is seen by traffic heading north on Route 1. Approximately 1.5 miles south of Gillette Stadium/Patriot Place- home of the NFL Champion New England Patriots, and Major League Soccer New England Revolution. 2 miles north of I-495 N/S on ramps, being a major thoroughfare for Cape Cod and Island traffic in summer months. Within 2 miles of major retailers Target and Lowes, and also provides outstanding coverage for Wrentham Village Premium Outlet Mall, one of the largest upscale retail outlets in the state of Massachusetts.

#### details

**Location:** Route 1 S/O Gillette Stadium (F/S) - Foxboro/Wrentham/Planville, Massachusetts

**Size:** 14'x48' Bulletin

**Direction facing:** South

**Weekly Impressions:** 137,982

**Illumination:** Yes

**Latitude:** 42.074152

**Longitude:** -71.287004

TAB ID # 30815541



Advertising LLC

415 Neponset Avenue, Dorchester, MA 02122 Tell: (617)282-2100 Fax: (617)282-2040

**MA #2- Route 1, S/O Gillette Stadium (F/S) Foxboro/Wrentham, Massachusetts**



**description**

This extensive left hand read is seen by traffic heading south on Route 1. Located approximately 1.5 miles south of Gillette Stadium (home of the NFL New England Patriots) and Patriot Place; and 2 miles north of the I-495 N/S on ramps- which is a major thoroughfare for Cape Cod and Islands traffic. Within 2 miles of major retailers Target and Lowes, and provides outstanding directional coverage for Wrentham Village Premium Outlet Mall, the largest upscale retail outlet in the state of Massachusetts.

**details**

**Location:** Route 1, S/O Gillette Stadium (F/S) Foxboro/Wrentham, Massachusetts

**Size:** 14x48 Bulletin

**Weekly Impressions:** 143,361

**Direction facing:** North

**Illumination:** YES

**Latitude:** 42.074175

**Longitude:** -71.286987

TAB ID # 30815542



Advertising LLC

415 Neponset Avenue, Dorchester, MA 02122 Tell: (617)282-2100 Fax: (617)282-2040

**MA #3 - Route 1 N/O Gillette Stadium/Patriot Place- FOXBORO, Massachusetts \*Premium Digital**



**description**

Extensive right - hand approach seen heading north on Route 1. 3/4 of a mile north of Gillette stadium/ Patriot Place-Home of the NFL Champion New England Patriots and New England Revolution, and 1.5 miles from the I-95 north and south on ramps in Sharon. Gillette Stadium/Patriot Place has over 1.3 million square feet of retail space, and 12 upscale restaurants and bars .

**details**

**Location:** Route 1 N/O Gillette Stadium/Patriot Place.

**Size:** 14x48 Premium Digital

**Direction facing:** South

**Weekly Impressions:** 86,394

**Latitude:** 42.108176

**Longitude:** -71.248145

**Pixel Size:** 880 x 264

TAB ID #30815543



Advertising LLC

415 Neponset Avenue, Dorchester, MA 02122 Tell: (617)282-2100 Fax: (617)282-2040

MA #4 - Route 1 N/O Gillette Stadium/Patriot Place- FOXBORO, Massachusetts \*Premium Digital



#### description

Extensive left hand approach seen by traffic headed south on Route 1, towards Gillette Stadium/Patriot Place-Home of The NFL New England Patriots and New England Revolution.  $\frac{3}{4}$  of a mile north of the Main North Entrance of Gillette Stadium. Connects with traffic headed south on Route 1-towards I-495, and to Plainridge Park Casino, and all Cape Cod and Island bound traffic.

#### details

**Location:** Route 1 N/O Gillette Stadium/Patriot Place

**Size:** 14x48 Premium Digital

**Direction facing:** North

**Weekly Impressions:** 106,966

**Latitude:** 42.108203

**Longitude:** -71.248105

**Pixel Size:** 880 x 264

TAB ID # 30815544



Advertising LLC

415 Neponset Avenue, Dorchester, MA 02122 Tell: (617)282-2100 Fax: (617)282-2040

**MA #5 - I-93 @ Route 3 Junction (F/W) Braintree, Massachusetts**



**description**

14x48 tri-vision located on the most heavily traveled and congested roadway in Massachusetts; at the I-93 Junction with Route 3 in Braintree, Massachusetts. Bumper-to bumper traffic every morning and afternoon rush hours. 10+ mile backup in afternoon directly approaching and in front of this board. This unit faces West and connects with traffic headed East on I-93 (The Southeast Expressway), into Boston. Located at EXIT #6-The South Shore Plaza Mall, which is one of the largest retail malls in all of Metro Boston. Located less than 1/3 of a mile West of where I-93 Junctions with Route 3, which is only one of two major thoroughfares that leads to Cape Cod and The Islands. All upscale towns West of Boston must drive by this unit on their way to Boston, and Logan Airport, and Seaport District.

**details**

**Location:** I-93 @ Route 3 Junction

**Size:** 14x48 Tri-Vision

**Weekly Impressions:** 1,003,112

**Direction facing:** West

**Illumination:** YES

**Latitude:** 42.220901

**Longitude:** -71.003907

TAB ID # 30483519



Advertising LLC

415 Neponset Avenue, Dorchester, MA 02122 Tell: (617)282-2100 Fax: (617)282-2040

MA #7-Route 1, 0.5 Mile S/O Gillette Stadium/Patriot Place (F/N) -- Foxboro/Wrentham, Massachusetts



### description

Right hand read located one half mile south of Gillette Stadium and Patriot Place-home of the NFL Champions New England Patriots, and Major League Soccer's New England Revolution. Located at a major 4 way stoplight (Route 1 and Pine Street). Seen headed south on Route 1-towards I 495 Junction-which is heavy Cape Cod and Islands thoroughfare, and Plainridge Park Casino, Massachusetts only casino. Additionally targets Wrentham Village Premium Outlet Mall, the largest upscale mall in the state.

### details

**Location:** Route 1, 0.5 Mile S/O Gillette Stadium/Patriot Place

**Size:** 14x48

**Direction facing:** North

**Weekly Impressions:** 112, 621

**Illuminated:** Yes

**Latitude:** 42.081297

**Longitude:** -71.280746

TAB ID # 30825458

# CARROLL

Advertising LLC

415 Neponset Avenue, Dorchester, MA 02122 Tell: (617)282-2100 Fax: (617)282-2040

MA #8-Route 1, 0.5 Mile S/O Gillette Stadium/Patriot Place (F/S) -- Foxboro/Wrentham, Massachusetts



## description

Left hand approach/read located one –half mile south of Gillette Stadium and Patriot Place-Home of the NFL Champions New England Patriots and Major League Soccer’s New England Revolution. Located at major 4 way light at Route 1 and Pine Street. Seen heading north on Route 1, towards Gillette Stadium. 3 miles north of I-495 Junction- which is heavy Cape Cod and The Islands thoroughfare, and Plainridge Park Casino, Massachusetts only casino. Additionally targets Wrentham Village Outlet Mall, the largest upscale mall outlet in all of Massachusetts.

## details

**Location:** Route 1; 0.5 Miles S/O Gillette Stadium/Patriot Place

**Size:** 14x48

**Direction facing:** South

**Weekly Impressions:** 105,885

**Illuminated:** Yes

**Latitude:** 42.081282

**Longitude:** -71.280746

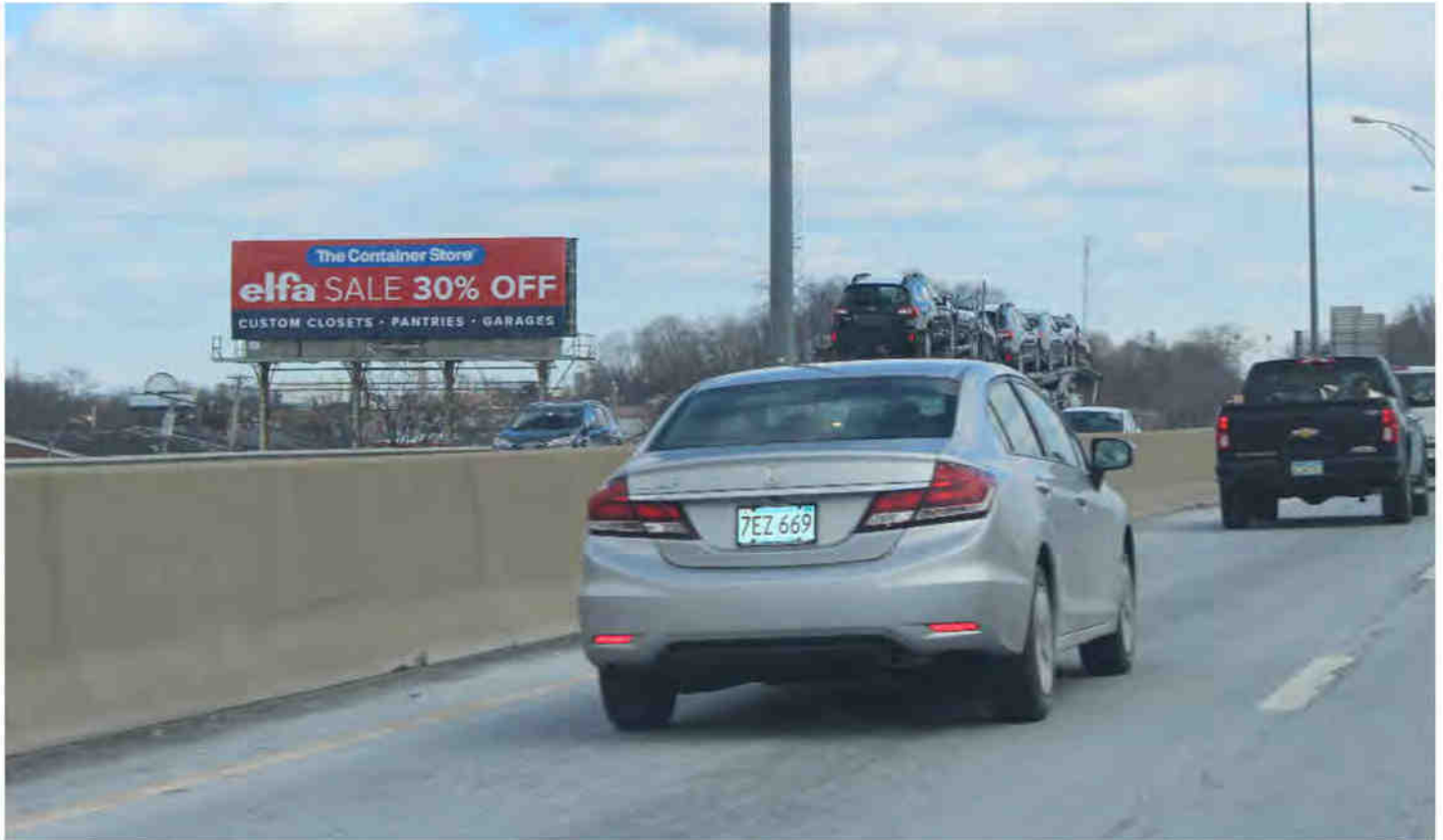
TAB ID # 30825457

# CARROLL

Advertising LLC

415 Neponset Avenue, Dorchester, MA 02122 Tell: (617)282-2100 Fax: (617)282-2040

**MA #9 - Route I-90 (The Mass. Pike) W/O Allston/Brighton/Cambridge Exit (#18)**



## description

Extensive left hand read that connects with traffic originating from the affluent Metro-West Boston suburbs (Newton/Weston/Wellesley) and points further west (Framingham/Natick). Seen heading East on The Mass Pike into Downtown Boston. Located one mile west of Exit #18- which is Allston Brighton (Commonwealth Avenue) and Cambridge (Storrow Drive) Exit. One and a half miles from Fenway Park, and local college traffic such as Boston University, Harvard, and Northeastern.

## details

**Location:** I-90 (The Mass. Pike) W/O Allston/Brighton/Cambridge Exit (#18)

**Size:** 14x48

**Direction:** facing: West

**Weekly Impressions:** 745,340

**Latitude:** 42.358135

**Longitude:** -71.157435

TAB ID # 30858658



# CARROLL

Advertising LLC

415 Neponset Avenue, Dorchester, MA 02122 Tell: (617)282-2100 Fax: (617)282-2040

MA # 10 - Route 1 @ Route 106 Junction (F/N) –Plainville/Wrentham, MA. Premier Digital



## description

Left hand read located at a major 4 way stoplight (Route 1 and Route 106). Billboard seen headed south on Route 1- towards Route 1A and towards North Attleboro, and The Rhode Island boarder. Connects with traffic headed towards I-495 north and south, and towards Wrentham Village Premium Outlets, and traffic originating from the towns of N. Attleboro, Plainville, Wrentham, Foxboro, Mansfield, and Walpole

## details

**Location:** Route 1 @ Route 106 Junction

**Size:** 10x30

**Direction facing:** North

**Weekly Impressions:** 57,420

**Illuminated:** Yes

**Latitude:** 42.005968

**Longitude:** -71.32329

TAB ID # 30921468



Advertising LLC

415 Neponset Avenue, Dorchester, MA 02122 Tell: (617)282-2100 Fax: (617)282-2040

MA # 11 - Route 1 @ Route 106 Junction (F/S) -Plainville/Wrentham, MA. Premium Digital



description

Right hand read located at a major 4-way stoplight, (Route 1 and Route 106). Seen headed north on Route 1- towards Gillette Stadium/Patriot Place and I-495. Southernmost billboard located in the Boston metro market. Connects with traffic originating from N. Attleboro, Attleboro, Plainville, Wrentham, Mansfield, and Foxboro.

details

**Location:** Route 1 @ Route 106 Junction

**Size:** 10x30

**Direction facing:** South

**Weekly Impressions:** 66,193

**Illuminated:** Yes

**Latitude:** 42.005968

**Longitude:** -71.32329

TAB ID # 30921469



Advertising LLC

415 Neponset Avenue, Dorchester, MA 02122 Tell: (617)282-2100 Fax: (617)282-2040

**MA#12: Route 1, 0.75 Miles S/O I-95 N/S On Ramps (F/S)-Sharon/Walpole Massachusetts**



**description**

Longest approach, and best 14x48 static unit on Route 1. Billboard is seen headed north on Route 1, from Gillette Stadium/Patriot Place-towards the I-95 N/S "Round About" in Sharon Massachusetts. Board can be seen from 4 way stoplight at Route 1 and Pine Street. Approach is at least 35 seconds long. Commuters are heading towards the busy and congested Route 1 towns of Sharon, Norwood, Walpole, Foxboro, and Route 27 Junction with Route 1. Connects with Auto Mile customers, as well as The Walpole Mall, BIG Y Supermarket, and Stop & Shop.

**details**

**Location:** Route 1, 0.75 Miles S/O I-95 N/S On Ramps (F/S)-Sharon/Walpole Massachusetts

**Size:** 14x48 Static Bulletin

**Direction Facing:** South

**Weekly Impressions:** 145,872

**Latitude:** 42.119806

**Longitude:** -71.233519

TAB ID # 30967481



Advertising LLC

415 Neponset Avenue, Dorchester, MA 02122 Tell: (617)282-2100 Fax: (617)282-2040

**MA#13: Route 1, 0.75 Miles S/O I-95 N/S On Ramps (F/N)-Sharon/Walpole Massachusetts**



#### description

Left-hand extensive approach, this 14x48 static unit is seen headed south on Route 1, towards Gillette Stadium/Patriot Place, just north of the I-95 N/S On Ramps "Round About" in Sharon Massachusetts. Board can be seen from 4 way stoplight at Route 1 and Old Post Road. Commuters are heading towards the busy and congested Route 1 towns of Sharon, Walpole, Foxboro, and Route 27 Junction with Route 1. Connects with Auto Mile customers, as well as The Walpole Mall, BIG Y Supermarket, and Stop & Shop.

#### details

**Location:** Route 1, 0.75 Miles S/O I-95 N/S On Ramps (F/N)-Sharon/Walpole Massachusetts

**Size:** 14x48 STATIC Bulletin

**Direction Facing:** North

**Weekly Impressions:** (18+) 145,872

**Latitude:** 42.119806

**Longitude:** -71.233519

TAB ID # 30982869



Advertising Company, Inc.

415 Neponset Avenue, Dorchester, MA 02122 Tell: (617)282-2100 Fax: (617)282-2040

**MA #14 - Route 1, N/O I-95 N/S ON Ramps (F/N)- Sharon/Walpole, Massachusetts**



**description**

Outstanding long left-hand approach seen by traffic headed north on Route 1- towards the towns of Walpole, Norwood, and Westwood. This board is approximately one third of a mile south of the heavily congested area at the Route 1 and Route 27 Junction, and major 4-way stoplight. It's also less than one mile north of the I-95 North and South On - Ramps "Roundabout". Traffic passing this billboard is headed towards the most heavy retail area on Route 1, such as Walpole Mall, Norwood Auto Mile, and several major supermarkets such as Big Y, Stop & Shop, and Shaw's.

**details**

**Location:** Route 1, N/O I-95 N/S ON Ramps (F/N)- Sharon/Walpole, Massachusetts

**Size:** 14x48 STATIC BULLETIN

**Direction facing:** South

**Weekly Impressions:** (18+) 123, 559

**Illumination:** Yes

**Latitude:** 42.108203

**Longitude:** -71.248105

TAB ID # 30982870



Advertising Company, Inc.

1022 Morrissey Boulevard, Boston, MA 02122 Tell: (617)282-2100 Fax: 617-282-2040

**MA#15 - Route 1, N/O I-95 N/S ON Ramps (F/N) - Sharon/Walpole, Massachusetts**



**description**

Sensational long right hand read and hand approach, seen by traffic headed south on Route 1- towards I-95 N/S On Ramps, and The Sharon "Roundabout" Walpole. Exactly one mile north of I-95 Junction. This board is approximately one third of a mile south of the heavily congested area at the Route 1 and Route 27 Junction, and major 4-way stoplight. Traffic passing this billboard is headed towards Gillette Stadium/ Patriot Place , and I-495. Traffic originating from towns of Norwood, Walpole, Foxboro, and Sharon, as well as Walpole Mall, Norwood Auto Mile, several major supermarkets such as Big Y, Stop & Shop, and Shaw's pass this location.

**details**

**Location:** Route 1, N/O I-95 N/S ON Ramps (F/N)- Sharon/Walpole, Massachusetts

**Size:** 14x48 STATIC BULLETIN

**Direction facing:** North

**Weekly Impressions:** (18+) 106,700

**Illumination:** Yes

**Latitude:** 42.136045

**Longitude:** -71.221993

TAB ID # 30982871



Advertising LLC

415 Neponset Avenue, Dorchester, MA 02122 Tell: (617)282-2100 Fax: (617)282-2040

**MA#16: I-495, 1 Mile S/O EXIT #10 - RTE 123/Route 140 (F/S)—Norton/Mansfield, Massachusetts**



#### description

Truly a ONE-OF-A KIND 14x48 Digital Billboard located on I-495. Located Between EXIT # 10 (Route 123/Route 140), and EXIT #9 (Bay Street). This is seen headed north on I-495-towards Mass Pike, and Boston, and Gillette Stadium, (Route 1) area. Long left hand approach-close to a half mile long-and 20+ seconds. No other billboard on I-495 for 15+ miles in each direction! Outstanding location for beach traffic, as I-495 and Route 24 are two of only three major thoroughfares that lead to Cape Cod and The Islands. Great Xfinity Center coverage (Exit #10). Approximately 6 miles north of the I-495 Junction with Route 24. Provides coverage to the towns of Norton, Mansfield, Easton, and Taunton. Exit #12 is for Mansfield Crossing, and the dozens of retail stores and restaurants that are located in Mansfield Crossing on Route 140.

#### details

**Location:** I-495, 1 Mile S/O EXIT #10 - RTE 123/Route 140 (F/S)—Norton/Mansfield, Massachusetts

**Size:** 14x48 Premium Digital

**Direction Facing:** South

**Weekly Impressions:** 120,023

**Latitude:** 41.964216

**Longitude:** -71.145241

**Pixel Size:** 880 x 264

TAB ID # 30988460



Advertising LLC

415 Neponset Avenue, Dorchester, MA 02122 Tell: (617)282-2100 Fax: (617)282-2040

**MA#17 : I-495, 1 Mile S/O Exit # 10 (F/N)-Norton, Mansfield, Massachusetts**



## description

Truly one-of-a kind 14x48 Digital Billboard located on I-495. Located between Exit #10 (Route 123/Route 140), and Exit #9 (Bay Street). This is seen headed south on I-495, towards Cape Cod and Islands. No other billboard on this stretch of I-495 for 15+ miles in each direction. Heavy beach traffic come spring and summer. Xfinity Center in Mansfield just minutes away. Approximately 6 miles north of the I-495 Junction with Route 24. Provides coverage to the towns of Norton, Mansfield, Easton and Taunton. Exit #12- just 3 miles north, is Mansfield Crossing, and the dozens of retail stores and restaurants that are located there.

## details

**Location:** I-495, 1 Mile S/O Exit # 10 (F/N)-Norton, Mansfield, Massachusetts

**Size:** 14x48 Premium Digital

**Direction Facing:** North

**Weekly Impressions:** 155,861

**Latitude:** 41.967445

**Longitude:** -71.143823

**Pixel Size:** 880 x 264

TAB ID # 31023655





Advertising LLC

415 Neponset Avenue, Dorchester, MA 02122 Tell: (617)282-2100 Fax: (617)282-2040

---

**MA#18 I-290 @ Shrewsbury Street (F/E) Worcester, MA**



**description**

Extensive, long straight left hand approach. Board is seen heading West on I-290 -towards the Mass.Pike and Route 146. Board located in the heart of Downtown Worcester. Within a half-mile of the exitfor The DCU Center, and 1.1 miles from the Junction of I-290 and I-190.

**details**

**Location:** 1-290 @ Shrewsbury Street, Worcester, MA

**Size:** 14x48 feet

**Weekly Impressions:** 538,859 (18+)

**Direction facing:** East

**Illumination:** Yes

**Latitude:** 42.259156

**Longitude:** -71.79267

**TAB #** 30753159

# CARROLL

Advertising LLC

415 Neponset Avenue, Dorchester, MA 02122 Tell: (617)282-2100 Fax: (617)282-2040

**MA# 19 I-290 W/O Shrewsbury Street (F/W)**



## description

Outstanding, long right hand read located in the heart of Downtown Worcester. Board is seen by traffic heading East on I-290, approximately 1.1 miles West of the Junction of I-290 and I-190. Located just before the exit for Shrewsbury Street, one of the most culturally diverse streets in all of Worcester, and Exit # 16, which leads to all points Downtown, the DCU Center, and Highland Avenue..

## details

**Location:** I-290 W/O Shrewsbury Street (F/W)

**Size:** 14x48 Static Bulletin

**Weekly Impression:** 676, 122 (18+)

**Facing:** West

**Illumination:** Yes

**Latitude:** 42.259156

**Longitude:** -71.79267

**TAB ID #** 30753160



Advertising LLC

415 Neponset Avenue, Dorchester, MA 02122 Tell: (617)282-2100 Fax: (617)282-2040

MA#20 Route 1, 1 Mile S/O I-95 N/S On Ramps (F/N) \*Premier Digital-Sharon/Foxboro, MA..



## description

Outstanding left hand read/approach, located approximately 1 mile south of the Route 1 Junction and I-95 north and south on-ramps. One and a half miles north of Gillette Stadium/Patriot Place-home of the NFL New England Patriots, and New England Revolution, which is now a year round destination spot with over 50 retail stores and a dozen restaurants , as well as concerts and trade shows.

## details

Unit Name: Route 1, 1 Mile S/O I-95 N/S On Ramps (F/N) \*Premier Digital-Sharon/Foxboro, MA.  
Size: 14'x48'  
Weekly Gross Impressions: 87,258  
Facing: North  
Latitude: 42.118609  
Longitude: -71.234647  
TAB ID #: 30858913



Advertising LLC

415 Neponset Avenue, Dorchester, MA 02122 Tell: (617)282-2100 Fax: (617)282-2040

MA#21 Route 1, 1 Mile S/O I-95 N/S ON Ramps (F/S) 14x48 Bulletin Sharon/Foxboro, MA



**description**

The most extensive, right hand approach and best 14x48 bulletin on Route 1, (approximately 1/3 of a mile long). Board seen heading north on Route 1, approximately 1 mile south of the Route 1 junction and I-95 north and south on-ramps. Connects with traffic heading towards the Norwood Auto Mile, the largest concentration of auto dealers in the state of Massachusetts. 2 miles north of Gillette Stadium/Patriot Place-home of the NFL New England Patriots, and New England Revolution.

**details**

Unit Name: Route 1, 1 Mile S/O I-95 N/S On-Ramps, (F/S)  
 Size: 14'x48' Bulletin  
 Weekly Gross Impressions: 133,857  
 Facing: South  
 Illumination: Yes  
 Latitude: 42.118609  
 Longitude: -71.234647  
 TAB ID#: 30803576